



Let PrestoMarine lighten the load
With a PrestoMarine Lift you can quickly launch your tender or PWC from your swim platform.



L200F/L200R

Many boat owners will have learned how difficult and complicated it is to lift a dinghy or RIB onto their swim platform – and lifting a PWC is even more challenging. The usual method is to use a passerelle, but this is a tedious and time-consuming procedure that involves at least half-an-hours’ work for two people.

This is not the case with a PrestoMarine Lift. Using a unique and patented solution, it is now possible for just one person to launch or recover a boat or PWC in less than two minutes.

With a PrestoMarine Lift you can rapidly launch your tender to explore secluded bays and beaches or perhaps to ferry crew and passengers back and forth into areas inaccessible to a larger craft.

PrestoMarine Lift L200F/R

With a lifting capacity of 440 lbs, this model is designed to launch or lift a dinghy or lighter weight PWC such as the Sea-Doo Spark. The lift arms are fitted with adjustable keel supports suitable for flat-bottomed PWCs or dinghies with deeper V-shaped hulls.

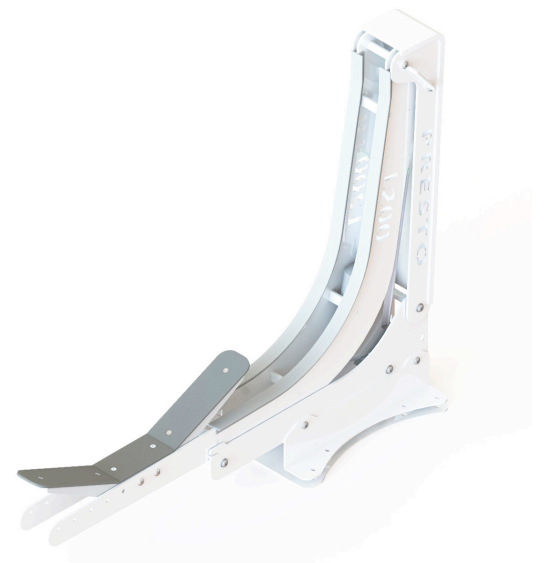
Installation

The PrestoMarine Lift L200F can lift up to a maximum height of 20 inches from the water level to the level of the swim platform. The swim platform must extend at least 20 inches in a fore-and-aft direction. Installing the Lift is quite easy but if you need any assistance we are there to guide you.

The L200R version can have rails in customized lengths. This type needs the swim platform to be at least 28 inches deep.

PRESTO L200F/R TECHNICAL SPECIFICATIONS

	L200F	L200R
LIFT		
Length	47 inches	47 inches
Width	5 inches	5 inches
Height submerged	10 inches	10 inches
Height raised	36 inches	36 inches
Weight	155 lbs	155 lbs
Lifting capacity	440 lbs	440 lbs
Materials	AISI 316	AISI 316
Finish	Powder coated	Powder coated
Keel supports	2 for tenders, 1 for PWC	2 for tenders 1 for PWC
FIXED BRACKET		
Length	17 inches	Customized
Width	10 inches	12 inches
Weight	7 lbs	44 lbs (for 39 inches)
ELECTRICAL SYSTEM		
Voltage	12V	12V
Wireless control	Standard	Standard



XL500F/XL500R

PrestoMarine Lift XL500F/R

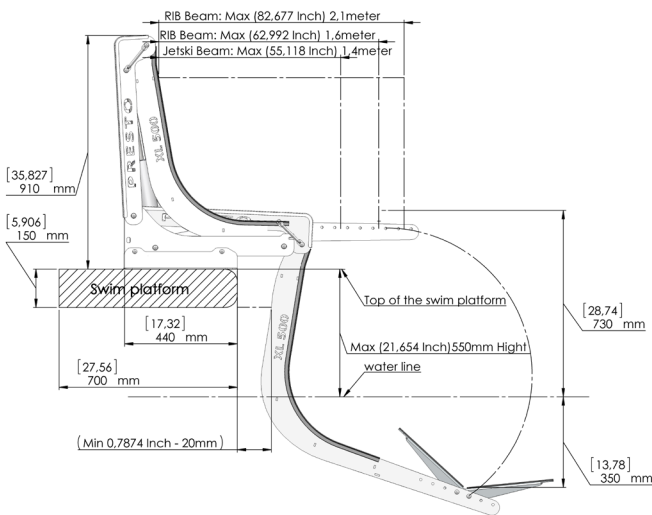
This more powerful model can lift 1100 lbs, making it suitable for heavier dinghies and PWCs. It comes in two versions: one with fixed brackets (XL500F) and one with rails (XL500R).

The rail system allows you to bring the PWC closer to the transom, thereby placing its weight where it will have less effect on your boat's trim. On boats with narrow swim platforms, the PWC will already be close enough to the transom so the 500F model is sufficient.

The lifting height is 20 inches for both models and the lifting arms have the same set of keel supports as the L200F – that's to say supports for both tender and PWC.

Installation

The PrestoMarine Lift XL500F requires a swim platform that is 20 inches deep. The XL500R version can have rails in customized lengths. This type needs the swim platform to be at least 28 inches deep.



PRESTO XL500F TECHNICAL SPECIFICATIONS

LIFT	XL500F	XL500R
Length	47 inches	47 inches
Width	5 inches	5 inches
Height submerged	10 inches	10 inches
Height raised	36 inches	36 inches
Weight	176 lbs	176 lbs
Lifting capacity	1100 lbs	1100 lbs
Materials	AISI 316	AISI 316
Finish	Powder coated	Powder coated
Keel supports	2 for tenders, 1 for PWC	2 for tenders 1 for PWC

	FIXED BRACKET	RAIL SYSTEM
Length	17 inches	Customized
Width	10 inches	12 inches
Weight	7 lbs	44 lbs (for 39 inches)

HYDRAULIC SYSTEM	XL500F	XL500R
Power	12V/1800W, 24V /2200W	12V/1800W, 24V /2200W
Working pressure	120-160 bar	120-160 bar
Tank volume	3 l	3 l
Extra pump	Hand pump	Hand pump
Weight	15 lbs	15 lbs
Type of Oil	Bio hydraulic oil	Bio hydraulic oil

ELECTRICAL SYSTEM	XL500F	XL500R
Voltage	12/24V	12/24V
Cable control	Standard	Standard
Wireless control	Optional	Optional



A note from a recent customer

"PrestoMarine Lifts proved to fulfill all my wishes. The patent underlying the product is simply ingenious. The simplicity and speed of use are the main advantages. Wherever I dock my boat, a crowd gathers, wanting me to demonstrate how it works. I am delighted with my PrestoLift and the amazing service PrestoMarine provides."

Jan-Erik Henriksen, Oslo, Owner of a North West 560



PERFORMANCE

Our PrestoMarine Lifts come with fixed brackets or a rail system. Rails allow a RIB or PWC to be positioned further forward, closer to the boats' stern. On yachts with deeper swim platforms, this assures that the boat's handling characteristics are not impaired, particularly in a following sea. Note also that the keel supports securing the PWC or RIB can be adjusted to fit any type of watercraft.

SAFETY

PrestoMarine Lifts are CE approved. CE marking is mandatory for certain product groups within the European Economic Area. The lifts have an automatic locking mechanism and a multi-locking bar system to prevent accidents. The products are also designed to handle more than four times the rated lifting weight and have built in hydraulic failure systems making them ultra safe to operate.

QUALITY

All our products follow the Swedish tradition of high quality manufacturing by using only the best materials chosen specifically to withstand the demanding conditions of service at sea.

DESIGN

At PrestoMarine we pride ourselves on developing products that combine elegance with user flexibility. Modern design brings together simplicity and flexibility ensuring that your PrestoMarine Lift will blend seamlessly with the lines of your vessel. The combination of careful design and the highest quality engineering means you can look forward with confidence to many years of pleasurable and reliable service.

SOLE AUSTRALIAN DISTRIBUTOR

Denis Glennon AO

Tel: 0418 923 103

Email: denis@denisglennon.com

● CN Pat. App. No. P201280018792.4

● US Pat. App. No. 14/003220

● EP Pat. App. No. 12755092.9

● SE Pat. No. 1100153-4